



TURKISH

LAMB PRODUCTION
CATALOGUE



HARVEST
STAR ET





HARVEST

STAR ET

MILK FED LAMB



STAR ET
TURKEY

Lamb fed with only milk less than 45 days old.
Pink color, juicy and tender

MILK
FED LAMB

NEAMI
WHOLE CARCASS



DISCRIPTION

Milk fed lamb carcass fresh.

Weight: from 4 – 6 kg, 6 – 7 kg and 7 – 9 kg

PACKING

Fresh: stockinette + trunk. / vacuum

Frozen: stockinette + Plastic bag / vacuum



MILK
FED LAMB

NEAMI
HALF CARCASS



DISCRIPTION

Milk fed lamb half carcass fresh and frozen.
Weight: from 2.5 kg, 3.5 kg and 4.5 kg

PACKING

Fresh: vacuum packed
Frozen: vacuum packed



MILK
FED LAMB

NEAMI
LEG



DISCRIPTION

Milk fed lamb leg fresh and frozen.

PACKING

Fresh: vacuum packed
Frozen: vacuum packed



www.harvestwld.com

MILK
FED LAMB

NEAMI
SHOULDER



DISCRIPTION

Milk fed lamb shoulder fresh and frozen.

PACKING

Fresh: vacuum packed
Frozen: vacuum packed



www.harvestwld.com

MILK
FED LAMB

MEAMI
SHOULDER BONE -IN



DISCRIPTION

Milk fed lamb shoulder fresh and frozen.

PACKING

Fresh: vacuum packed
Frozen: vacuum packed



www.harvestwld.com



HARVEST

STAR ET

LAMB



STAR ET
TURKEY

Lamb fed with milk and cereal. Pink color, juicy and tender with delicious flavor and texture. Processed in high sanitary standard from breeding to production

LAMB

NEAMI WHOLE CARCASS



DISCRIPTION

Milk and cereal fed lamb carcass fresh and frozen.
Weight: from 10 – 12 kg, 12 – 16 kg and 16 – 20 kg

PACKING

Fresh: stockinette + trunk. / vacuum
Frozen: stockinette + Plastic bag / vacuum



LAMB

NEAMI LEG



DISCRIPTION

Lamb leg from milk and cereal fed carcass, fresh and frozen.
Carcass weight: from 10 – 12 kg, 12 – 16 kg and 16 – 20 kg

PACKING

Fresh: Cryovac vacuum
Frozen: Cryovac vacuum



LAMB

NEAMI LION BONE -IN



DISCRIPTION

Lamb lion bone in from milk and cereal fed carcass,
weight: from 1.9 kg, 1.9 – 2.4 kg and 2.4 – 2.6 kg

PACKING

Fresh: Cryovac vacuum
Frozen: Cryovac vacuum



www.harvestwld.com

LAMB

NEAMI CKT LEG



DISCRIPTION

A hind **leg** with the chump and knuckle tip are removed, with shank, aitch bone, and femur bone remaining, from milk and cereal fed carcass,

PACKING

Fresh: Cryovac vacuum
Frozen: Cryovac vacuum



LAMB

NEAMI ABO LEG



DISCRIPTION

A hind **leg** with the chump bone, aitch bone and knuckle tip removed leaving a boneless chump shank and femur bone remaining from milk and cereal fed carcass,

PACKING

Fresh: Cryovac vacuum

Frozen: Cryovac vacuum



www.harvestwld.com

LAMB

NEAMI LAMB LEG SHANK OFF



DISCRIPTION

A hind **leg** with the chump and knuckle tip are removed, with shank is cut, from milk and cereal fed carcass

PACKING

Fresh: Cryovac vacuum
Frozen: Cryovac vacuum



LAMB

NEAMI LAMB SHOULDER



DISCRIPTION

Lamb shoulder, from milk and cereal fed carcass

PACKING

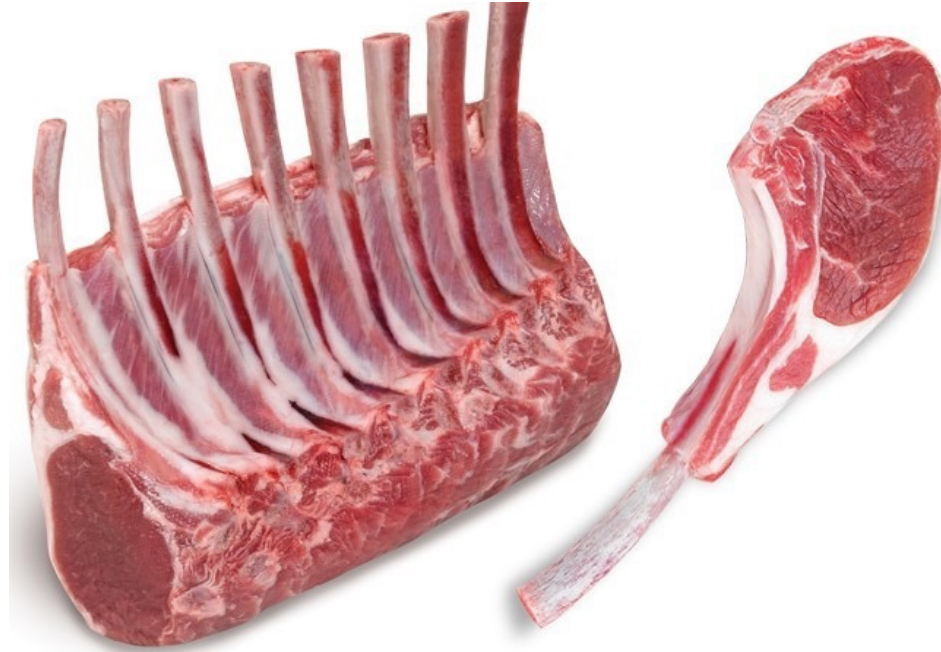
Fresh: Cryovac vacuum
Frozen: Cryovac vacuum



www.harvestwld.com

LAMB

NEAMI LAMB RACK FRENCHED



DISCRIPTION

Lamb rack, from milk and cereal fed carcass

PACKING

Fresh: Cryovac vacuum
Frozen: Cryovac vacuum



www.harvestwld.com

LAMB

NEAMI LION BONELESS



DISCRIPTION

Lamb lion boneless from milk and cereal fed carcass.

PACKING

Fresh: Cryovac vacuum



www.harvestwld.com

LAMB

NEAMI LAMB LEG CHOP



DISCRIPTION

Lamb leg chop, from milk and cereal fed carcass
Thickness: 12 – 15 mm

PACKING

Fresh: Cryovac vacuum / Skin packing
Frozen: Cryovac vacuum



www.harvestwld.com

LAMB

NEAMI LAMB CHOPS



DISCRIPTION

Lamb chops, from milk and cereal fed carcass
Thickness: 12 – 15 mm

PACKING

Fresh: Cryovac vacuum / Skin packing
Frozen: Cryovac vacuum



www.harvestwld.com

LAMB

NEAMI LAMB FORE SHANG



DISCRIPTION

Lamb chops, from milk and cereal fed carcass
Weight: from .250 - . 350 kg per piece

PACKING

Fresh: Cryovac vacuum / Skin packing
Frozen: Cryovac vacuum



www.harvestwld.com

LAMB

NEAMI LAMB HIND SHANG



DISCRIPTION

Lamb chops, from milk and cereal fed carcass
Weight: from .300 - . 400 kg per piece

PACKING

Fresh: Cryovac vacuum / Skin packing
Frozen: Cryovac vacuum



www.harvestwld.com



HARVEST

STAR ET

MUTTON



STAR ET
TURKEY

Mutton is the is the heaviest and eldest sheep. It provides intense flavor and aroma

LAMB

BALIKASEER MUTTON 6 WAY CUT



DISCRIPTION

Mutton in 6 pieces

2 forequarter, 2 legs, 2 lion and bone in

Weight: U18 – U20 – U24

Fresh: Cryovac vacuum

Frozen: Cryovac vacuum / Sealed packing



LAMB

BALIKASEER MUTTON WHOLE CARCASS



DISCRIPTION

Mutton whole carcass

Weight: U18 – U20 – U24 – U30

PACKING

Fresh: stockinette + trunk.

Frozen: stockinette + Plastic bag



MUTTON

BALIKASEER MUTTON 8 WAY CUT



DISCRIPTION

Mutton in 6 pieces

2 forequarter, 2 legs, 2 lion bone in and 2 flabs

Weight: U18 – U20 – U24

Fresh: Cryovac vacuum

Frozen: Cryovac vacuum / Sealed packing





HARVEST

STAR ET

GOAT



STAR ET
TURKEY

GOAT

GOAT WHOLE CARCASS



DISCRIPTION

Goat whole carcass
Weight 7 kg head on – 6 kg head off

PACKING

Fresh: Cryovac vacuum
Frozen: Cryovac vacuum

